



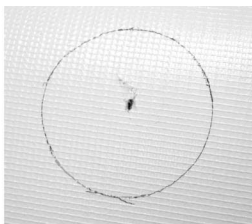
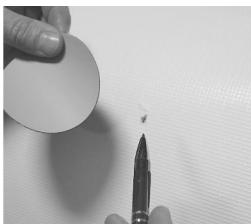
Hypalon Repair Kit

Instructions

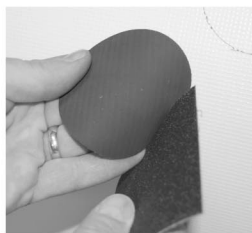
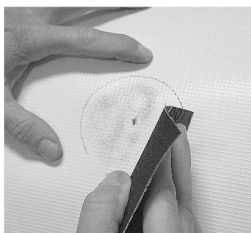
NOTE: Use only in a well ventilated area and avoid exposure to vapors. Do not use near heat or flames. Do not swallow. Avoid contact with skin and eyes.

To repair small tears and punctures:

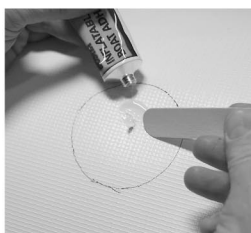
1. Be sure that temperature is above 70 degrees F and keep the un-inflated boat in a shady area. Be sure that boat is dry before attempting repair.



2. Chose a repair patch atleast 3” larger than the tear or puncture and trace around the patch.

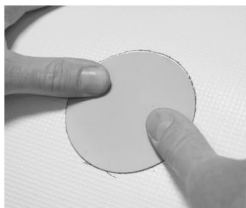


3. Using the sand paper included, scuff the area on the boat where the patch will be located and also the backside of the patch that will be used.



4. Apply 3 successive layers of adhesive to the repair area on the boat and to the patch. Wait 20 minutes between each layer or until the glue is dry to the touch.

5. After the third layer, position the patch without pressing, to be able to correct misalignment.



6. Thoroughly smooth the patch with a rounded object such as the back of a spoon, beginning at the center and working outwards.

7. Let dry for at least 24 hours before re-inflating the boat.